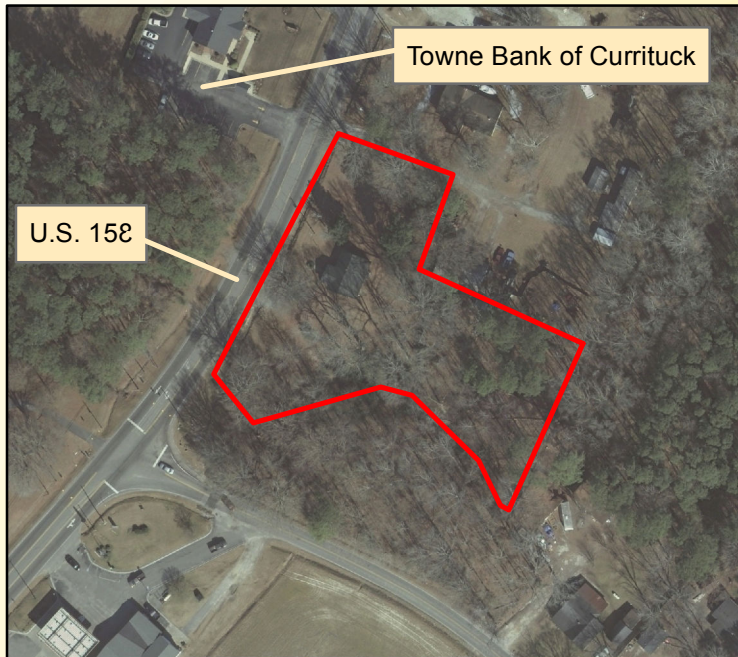


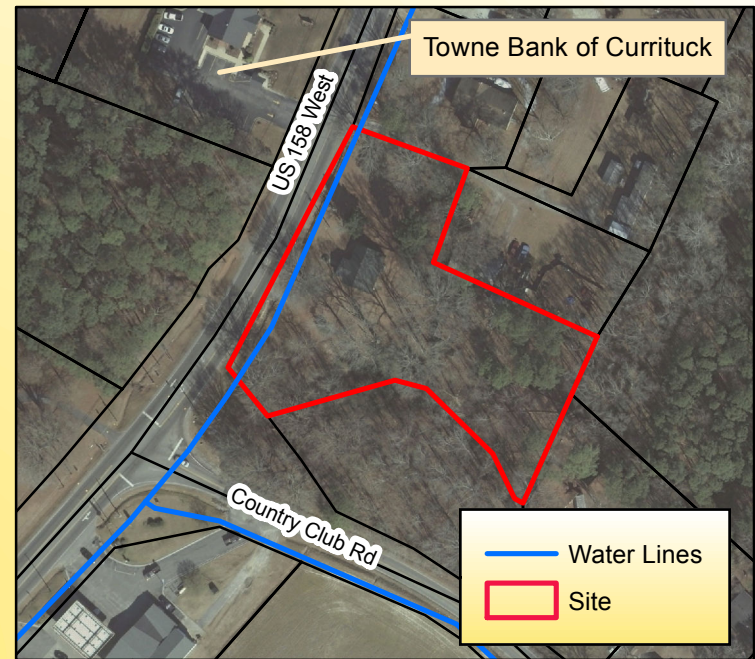
Kramer et al, c/o the Rich Company - Camden County, North Carolina



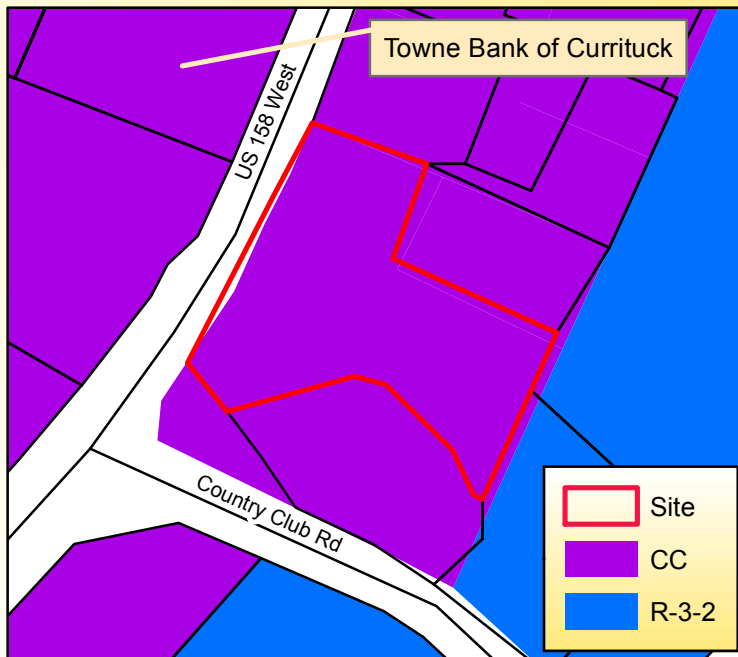
Aerial Photography



1:2,400



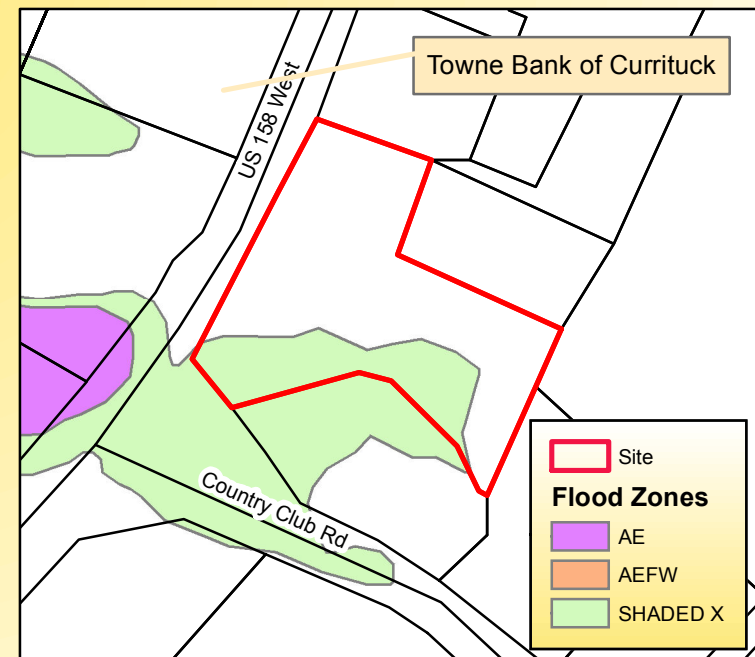
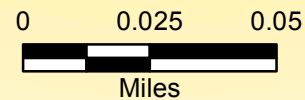
Aerial Photography and Infrastructure



Zoning

Produced by the
Camden County
Planning Department
(Laura Konwinski)
December 14, 2011

Source - Camden County
Planning Department
Projection - Lambert
Conformal Conic



Flood Zones