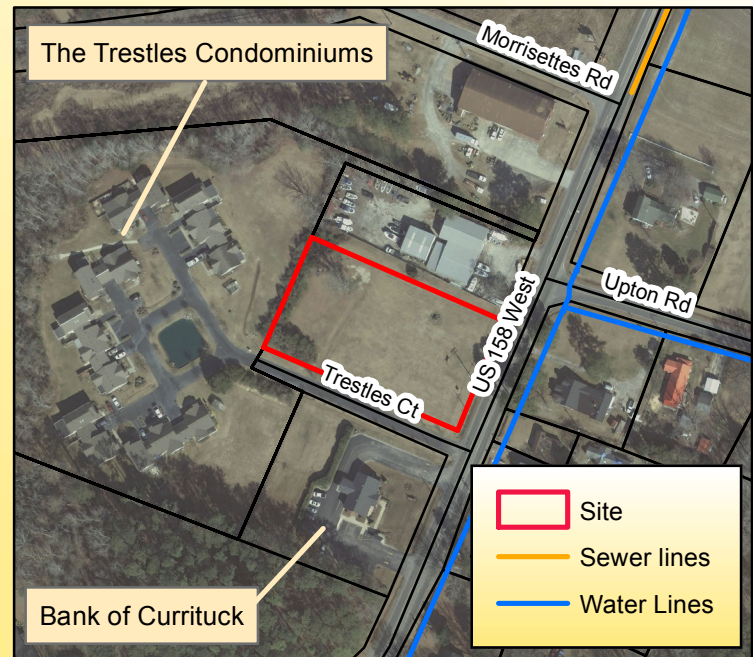


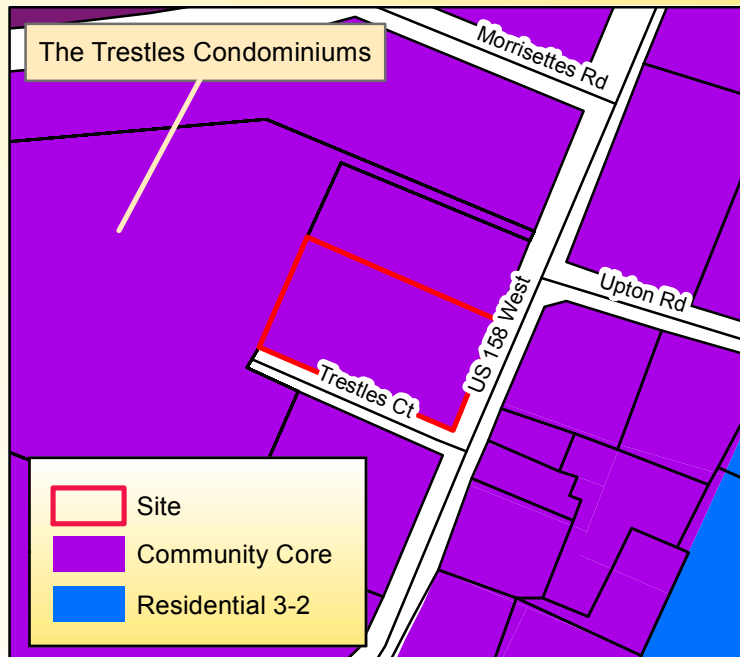
Owens Commercial Property - Camden County, North Carolina



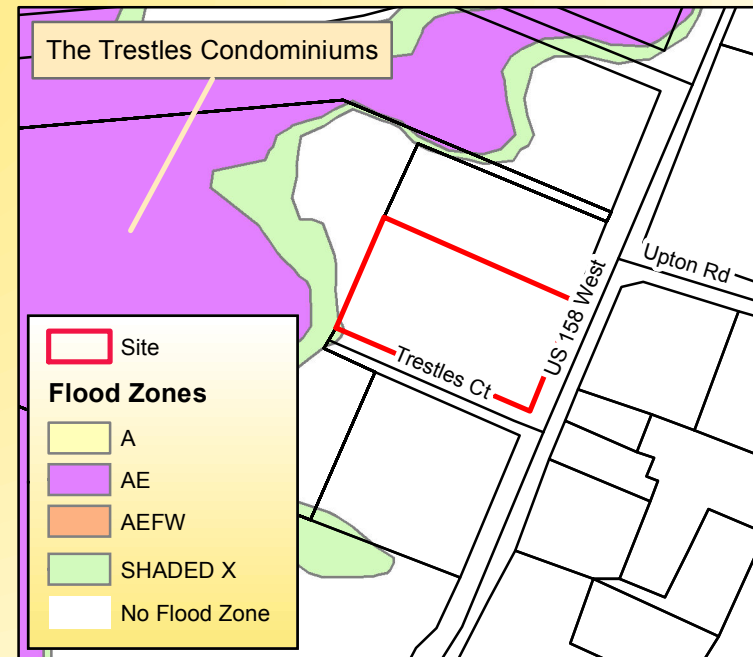
Aerial Photography



Aerial Photography and Infrastructure



Zoning



Flood Zones

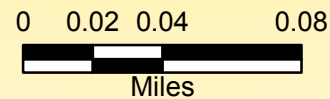


1:3,500



Produced by the
Camden County
Planning Department
(Laura Konwinski)
December 2, 2011

Source - Camden County
Planning Department
Projection - Lambert
Conformal Conic



Site
 Sewer lines
 Water Lines

Site
Flood Zones
 A
 AE
 AEFW
 SHADED X
 No Flood Zone