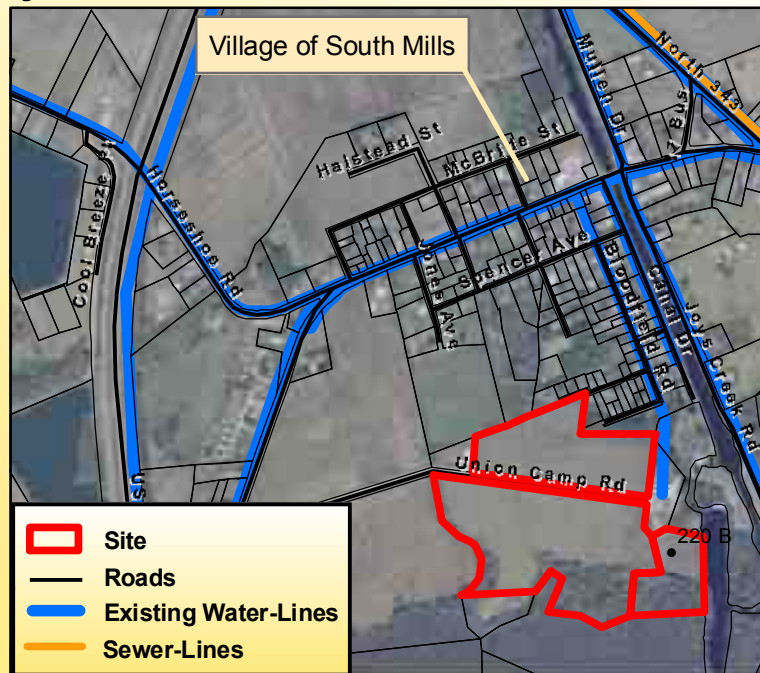


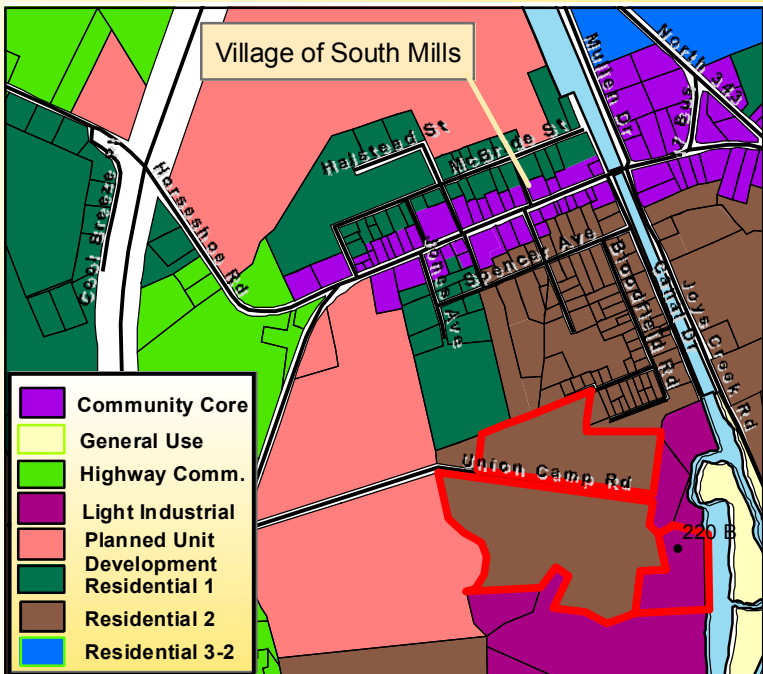
South Mills Barge Site - Camden County, North Carolina



Aerial Photography



Aerial Photography and Infrastructure



Zoning

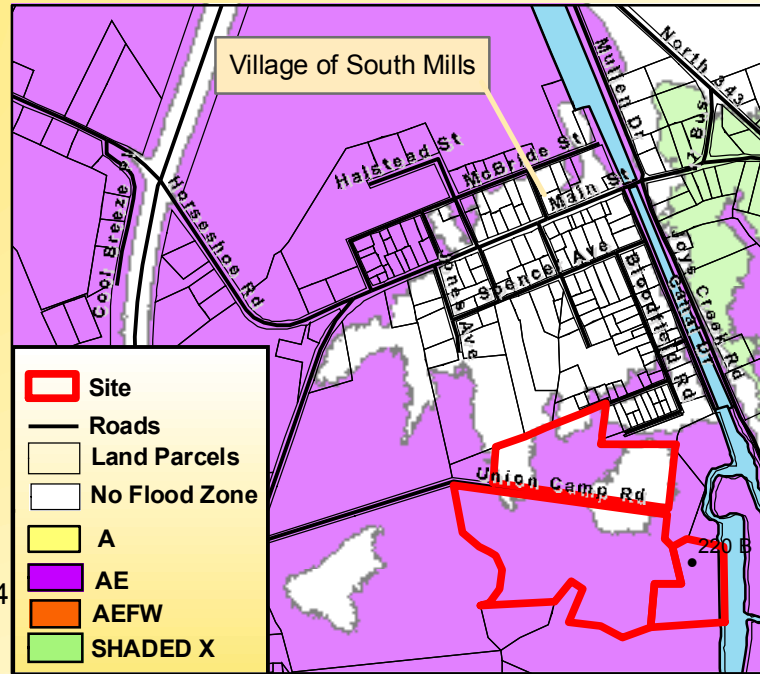
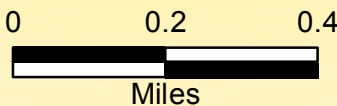


1:16,000



Produced by the
Camden County
Planning Department
(Tommy Burk)
August 18, 2008

Source - Camden County
Planning Department
Projection - Lambert
Conformal Conic



Flood Zones

- Site
- Roads
- Existing Water-Lines
- Sewer-Lines

- Site
- Roads
- Land Parcels
- No Flood Zone
- A
- AE
- AEFW
- SHADED X