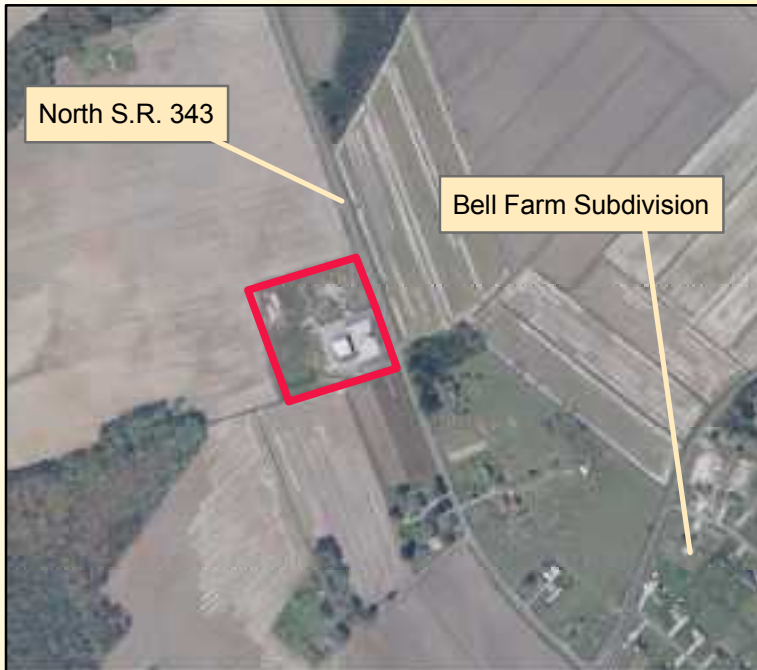


George Berry Commercial Property - Camden County, North Carolina



Aerial Photography



Aerial Photography and Infrastructure

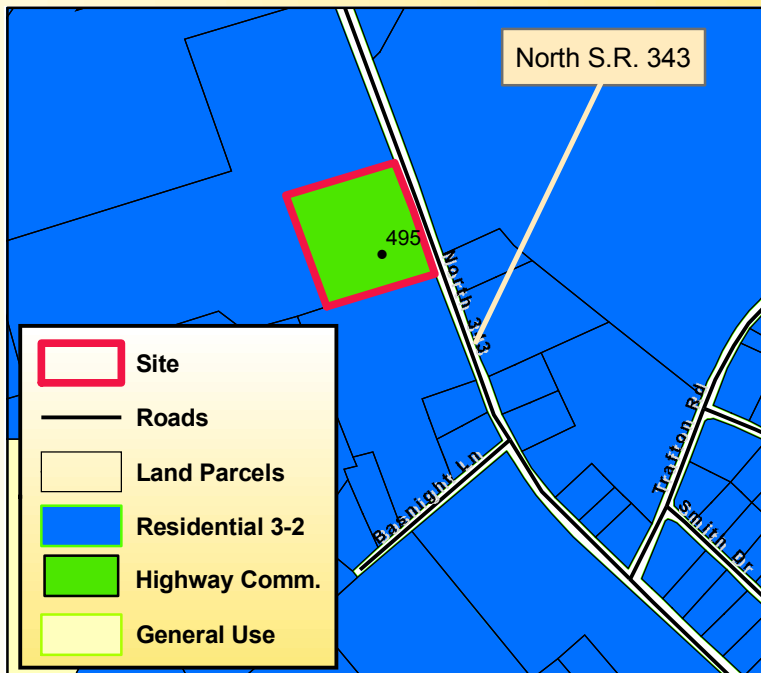
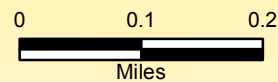


1:10,000

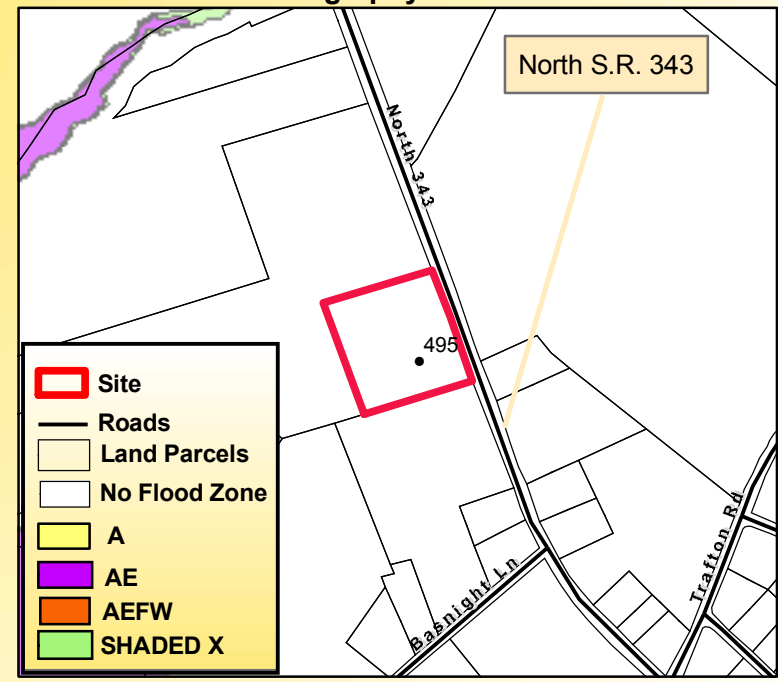


Produced by the
Camden County
Planning Department
(Tommy Burk)
October 9, 2008

Source - Camden County
Planning Department
Projection - Lambert
Conformal Conic



Zoning



Flood Zones