

RETAIL FOR LEASE

CAMDEN TOWNE CENTER

Highway 158 & Highway 343
Camden, North Carolina



- Units starting at 1,400 SF
- First phase – 15,000 SF; Total project – 60,000 SF
- Delivery Fall 2013
- High visibility
- Tenants include Todd's Pharmacy & a medical facility
- \$16.00 PSF
- Three 1.1 acre outparcels for sale
- Corner of Highway 158 & Highway 343; Adjacent to the Camden County Courthouse and Camden County High and Middle Schools
- Just east of Elizabeth City
- Traffic counts –13,000 VPD



DEMOGRAPHICS

	<u>1 Mile</u>	<u>3 Mile</u>	<u>5 Mile</u>
Population	370	3,671	25,646
Median HH Income	\$57,870	\$55,318	\$46,424

FOR MORE INFORMATION, PLEASE CONTACT:

Kevin O'Keefe

757.499.2790

kevin.okeefe@thalhimer.com

Natalie Hucke

757.213.4142

natalie.hucke@thalhimer.com

Sharon Ryals-Taylor

757.213.4145

sharon.ryals-taylor@thalhimer.com

CUSHMAN & WAKEFIELD | THALHIMER

The Town Center of VA Beach | 222 Central Park Ave.

Suite 1820, Virginia Beach, VA 23462

757.499.2900

thalhimer.com



CUSHMAN & WAKEFIELD

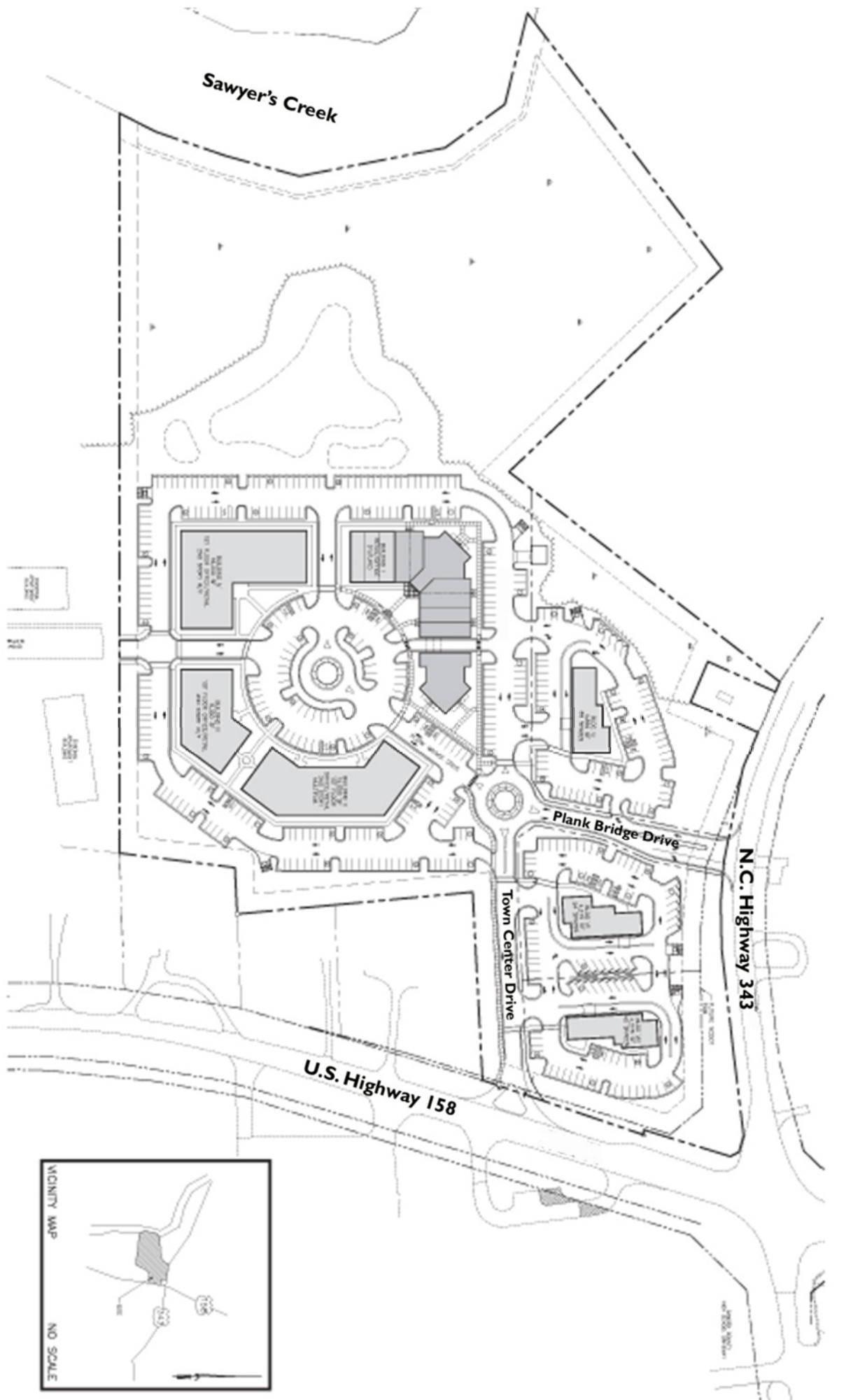
THALHIMER

INDEPENDENTLY OWNED AND OPERATED

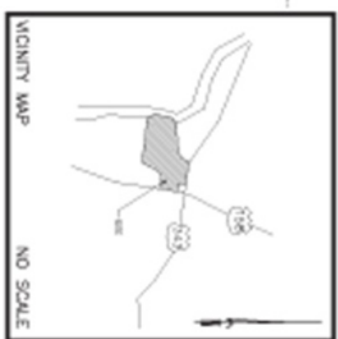
RETAIL SERVICES

Although the information contained herein was provided by sources believed to be reliable, Thalhimer makes no representation, expressed or implied, as to its accuracy and said information is subject to errors, omissions or changes.

VIRGINIA Richmond | Virginia Beach | Newport News | Fredericksburg | Roanoke | Lynchburg
NORTH CAROLINA Charlotte | Raleigh SOUTH CAROLINA Charleston | Greenville



Camden Towne Center



Integrated Design

Job Code: W00CLD
Date: 7 AUG 09

