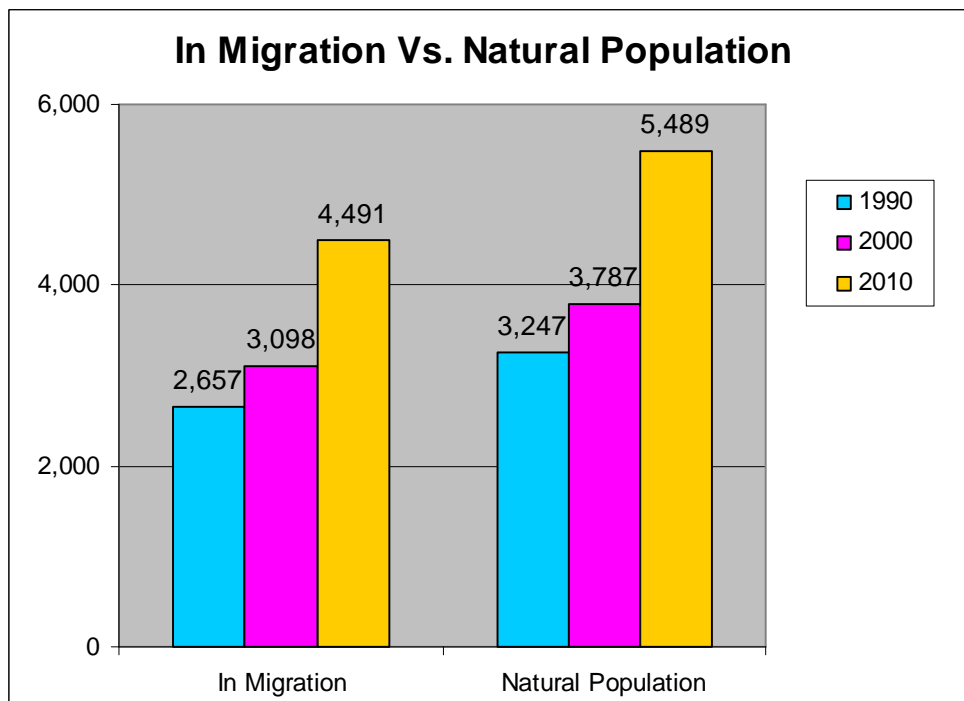


According to the US Census Bureau, 2010 Decennial Census, the population of Camden County is 9,980. Camden County's population grew by 40.84% between 1990 and 2010.

## In-Migration

Camden County's growth is due in large part to in-migration. According to the US Census Bureau, 55% of the 2006 population lived in the same house in 1995 and in 2000. If we assume that the same 55% were living in the same house in 1990 as well, and continued living there through 2010, then we can say that Camden County suffered a population out-migration (persons moving) and natural decrease (deaths of persons) between 1990 and 2010 which totaled approximately 415 persons. Approximately 4,491 persons (45% of the 2010 population) relocated to Camden County (in-migration) between the years 1990 and 2010. Natural population includes all those persons living in Camden County (taking into consideration births/deaths of persons) during the Decennial Census cycle. Calculations supporting these figures are shown on the next page.



## Population (*Continued*)

<b>2010, 2000, &amp; 1990 Population Totals</b>		
<u>2010</u>	<u>2000</u>	<u>1990</u>
9980	6885	5904
<i>Source: US Census Bureau</i>		

*In Migration* as of 2010  
= 45% X 9980  
= 4491

*Natural Population* as of 2010  
= 2010 Population - In Migration  
= 9980 - 4491 = 5489

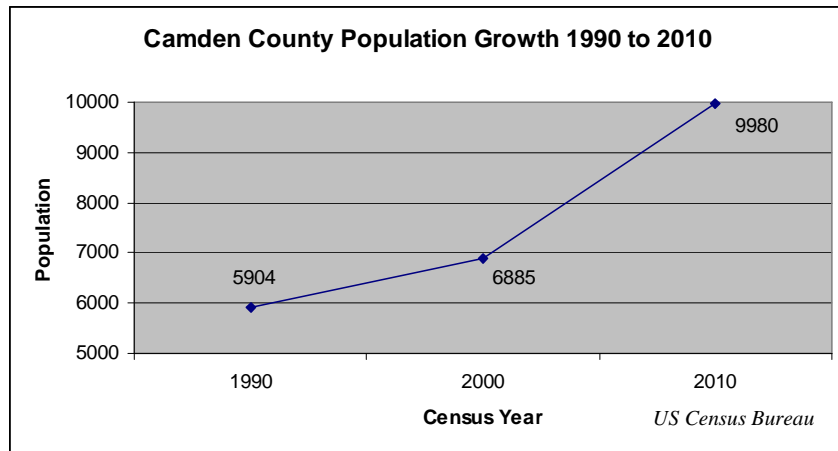
Recall that 55% of 2010 population is assumed to have continued to live in same house in year 1990.

Therefore, *Out-Migration and Natural Decrease*  
= 1990 Population - 2010 Natural Population  
= 5904 - 5489 = 415

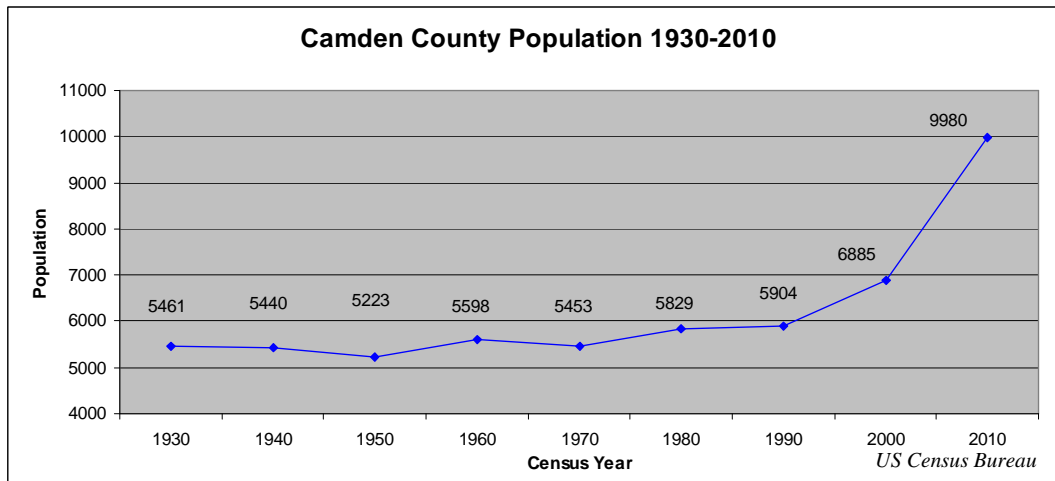
# Population (Continued)

## Population Growth

Between 1990 and 2010, the population of Camden County increased by 40.84% to 9,980. As stated previously, this increase is due in large part to in-migration. The average annual population increase was 2.04% between 1990 and 2010.



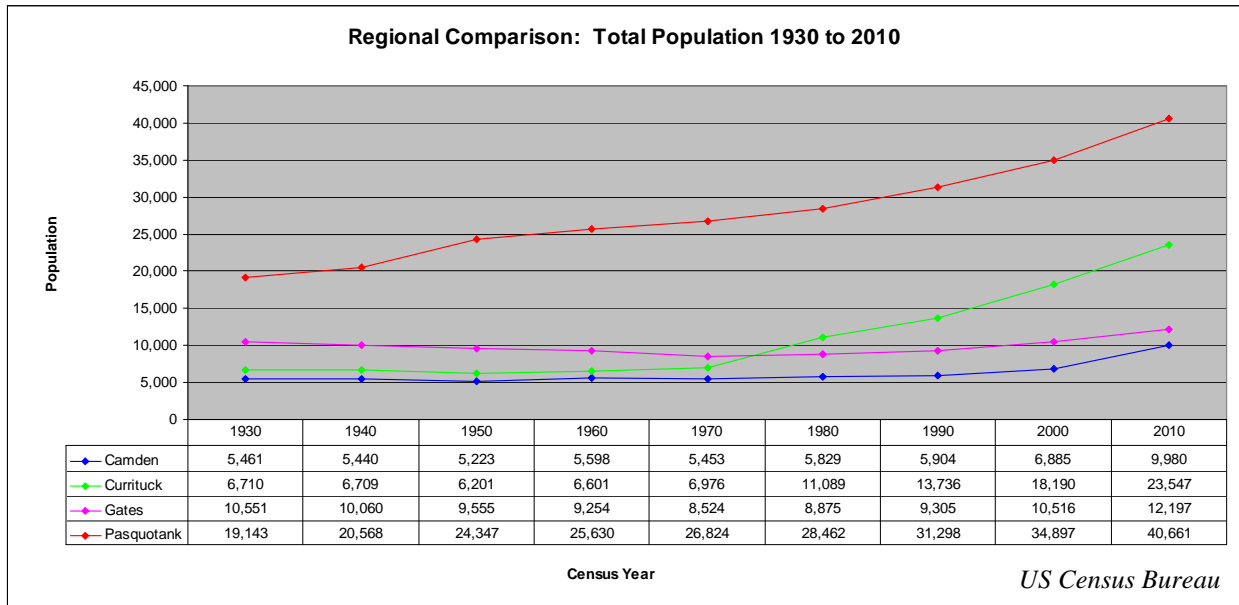
The graph below shows total population counts from the US Decennial Census dating back to 1930. As can be seen from this graph, Camden County's population did not change much between 1930 and 1970. There was a small increase of 376 persons between 1970 and 1980, and an even smaller increase of 75 persons between 1980 and 1990. Then, in the years between 1990 and 2000, Camden County experienced a population explosion. The years between 1990 and 2000 saw an increase of 981 persons, and in the years between 2000 and 2010 the county saw a further increase of 3,095 persons. Camden County's population has nearly doubled since 1930.



# Population (Continued)

## Regional Comparison: Total Population 1930 to 2010

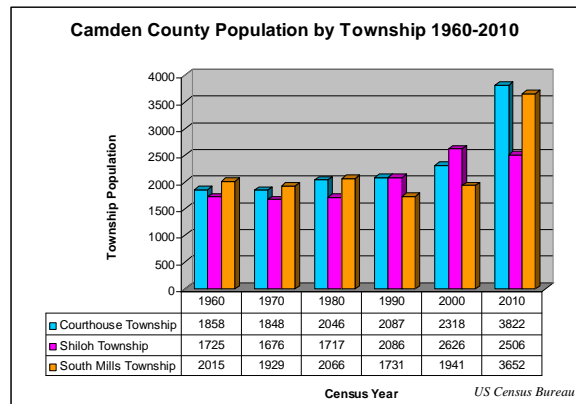
On a regional level, Camden County is not the only County to have experienced a population explosion. Between 1970 and 1980, the population of Currituck County increased by over 4000 persons, and continued to rise thereafter. While Pasquotank County did not experience a population explosion per se, its population has been on a steady incline since 1930 and has more than doubled in that time. The only county whose population has remained relatively unchanged over time is Gates County. In 1930 the population of Gates County was 10,551, and in 2010 the population reported by the US Census Bureau Decennial Census was 12,197.



# Population (Continued)

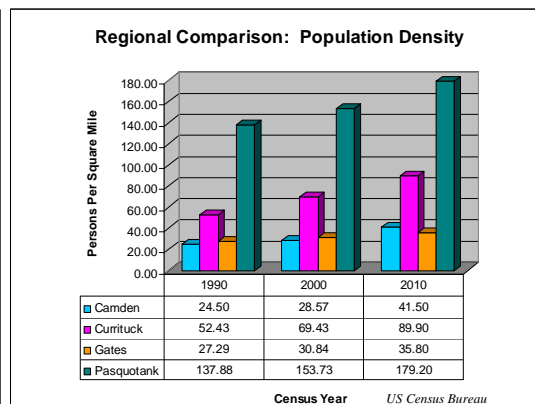
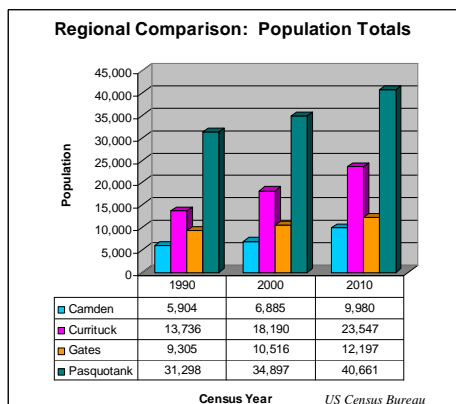
## Townships

Camden County is divided into 3 townships, Courthouse Township, Shiloh Township, and South Mills Township. US Census Bureau population data for all 3 townships dating back to 1960 are shown in the graph below. This data shows that historically Shiloh Township has had the fewest residents, that is up until 1990 when it was tied with the Courthouse Township. Then in 2000, Shiloh Township surpassed the other two townships by more than 300 residents, and in 2010 fell back into third place having the fewest residents after the 2010 Decennial Census. Overall, Camden County's three townships have experienced population growth, albeit at different paces.



## Regional Comparison: Population Totals and Population Density

On a regional level, Camden County has the lowest population of the 4 county area. Pasquotank County has the highest population, followed by Currituck and Gates Counties in that order. Pasquotank County leads in population density, followed by Currituck County, Camden County, and then Gates County. These trends have held true since 1990, as shown in the graphs below.



# Population (*Continued*)

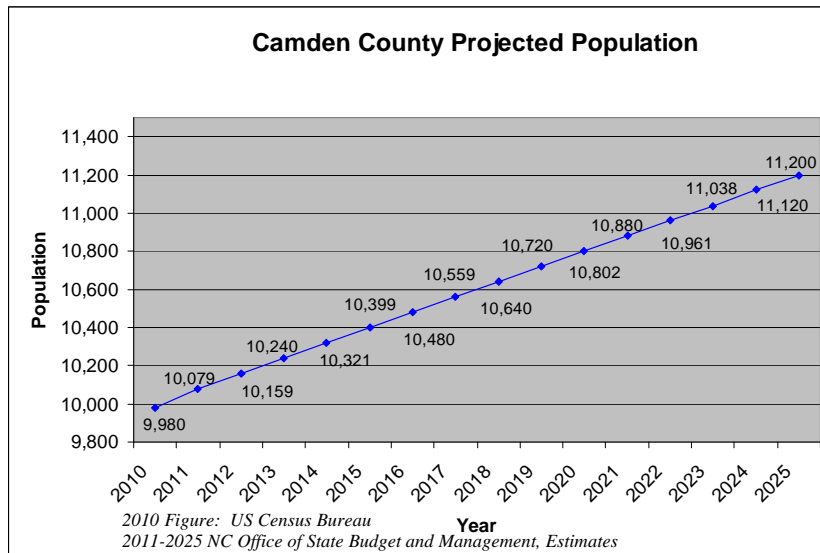
## Housing and Population Projections

New home construction and population increase figures (estimates and projections) from the NC Department of Commerce and the NC Office of State Budget and Management are shown below. Note that the 2010 figures are Official Decennial Census totals from the US Census Bureau.

The NC Department of Commerce is projecting that there will be an increase of 1,139 new homes built in the county within the 5 years between 2010 and 2015. Due to the current recession and decline in the housing market, however, it would seem unlikely that the actual number of homes by 2015 will match up to the corresponding estimate.

The NC Office of State Budget & Management is projecting an increase in the population totaling approximately 419 persons between 2010 and 2015.

<b>Camden County Yearly Population and Housing Projections</b>			
	2010	.....	2015
Total Homes by Year	4,104	.....	5,243
County Population	9,980	.....	10,399
<u>Sources:</u>			
2010 Data - US Census Bureau, 2010 Decennial Census			
2015 Data - Homes - NC Department of Commerce (estimate)			
Population - NC Office of State Budget and Management (estimate)			



This graph shows the full range of projected population growth as predicted by the NC Office of State Budget and Management. They predict that between 2010 and 2025, Camden County will have a population growth of 10.89%, or 1,220 persons.